

# 4T1-Luc

## Strain Information

SMOC番号	NM-S07-1
Cell Line	4T1-Luc
維持形態	Validation of tumorigenic capacity completed
説明	Luciferase-labeled mouse 4T1 cell.  *Literature published using this strain should indicate: 4T1-Luc cell line (Cat. NO. NM-S07-1) was purchased from Shanghai Model Organisms Center, Inc..

## 表現型データ

### 1. Transfer to liver and whole body

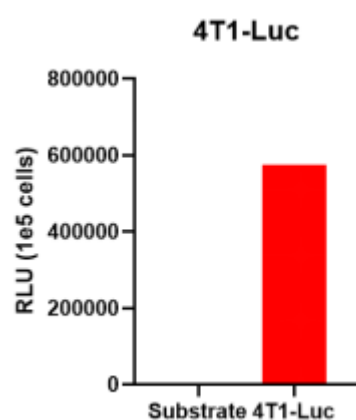


Figure 1. Luciferase activity assay of 4T1-Luc cell line

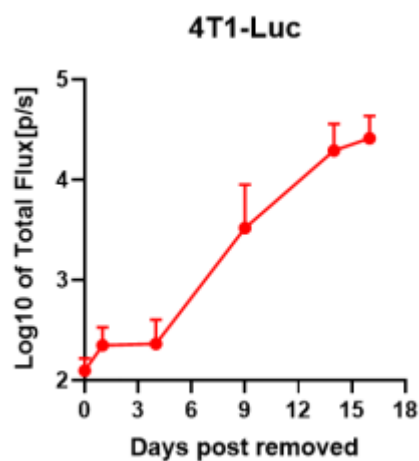


Figure 2. Signal increase curve of 4T1-Luc transfer allogeneic model (n=5)

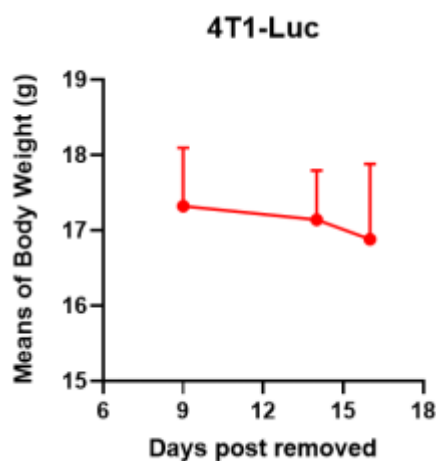


Figure 3. Body weight change of 4T1-Luc transfer allogeneic model (n=5)

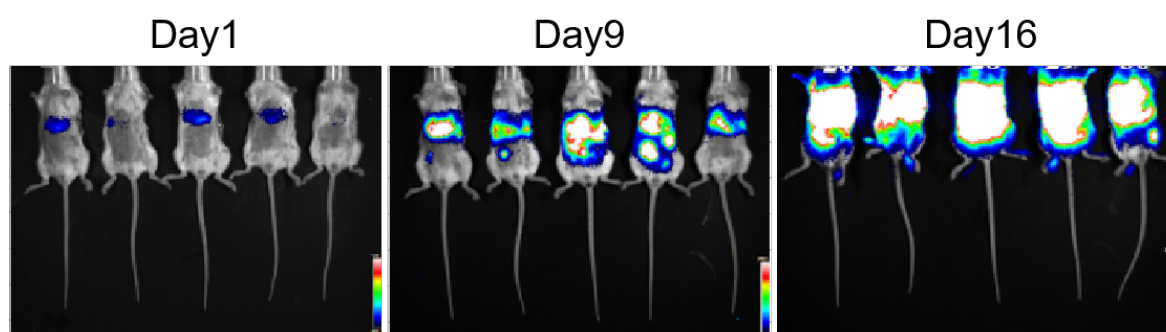


Figure 4. Bioluminescence imaging of 4T1-Luc transfer allogeneic mouse model

2. Transfer to lung from s.c.

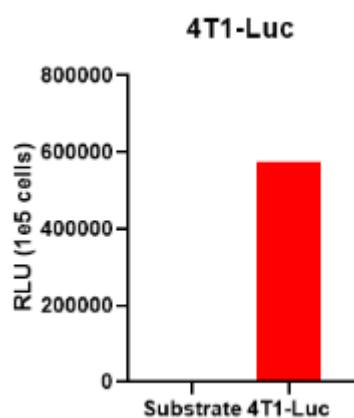


Figure 5. Luciferase activity assay of 4T1-Luc cell line

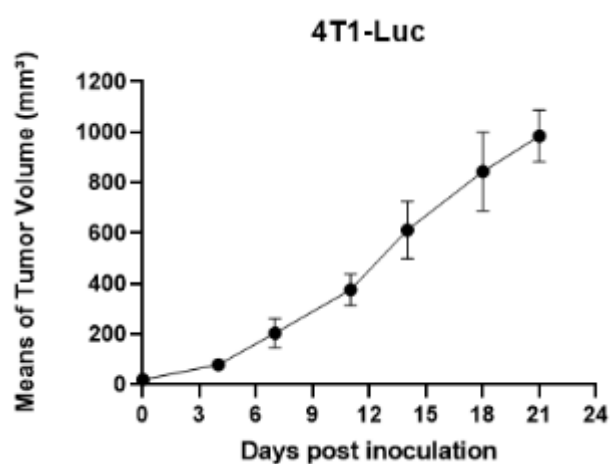


Figure 6. Tumor growth curve of 4T1-Luc allogeneic model (n=6)

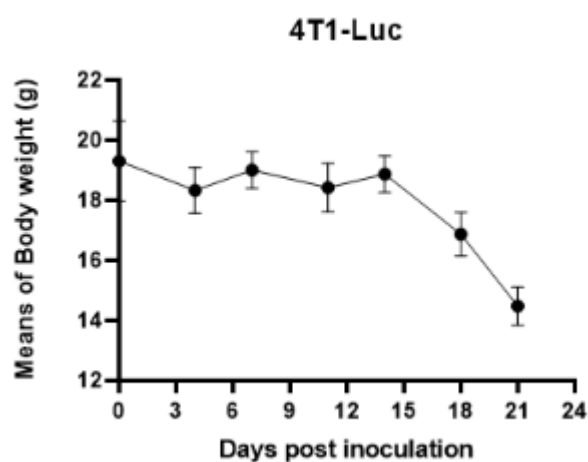


Figure 7. Body weight change of 4T1-Luc allogeneic model (n=6)

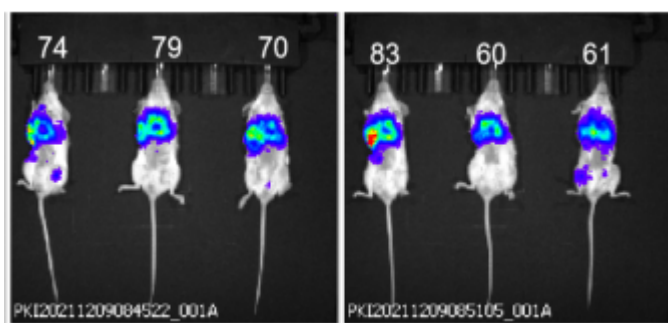


Figure 8. Bioluminescence imaging of 4T1-Luc allogeneic mouse model on day21